

## Converting module for small current

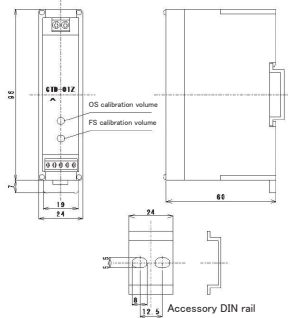


Model CTD-01Z

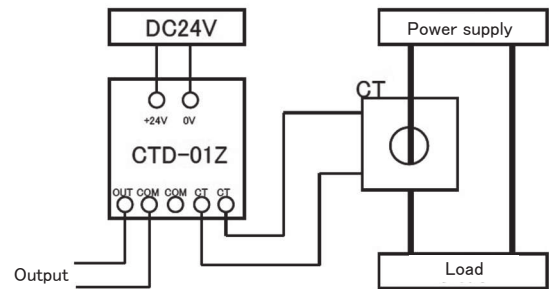
### [Feature]

- Output with converting AC 50/60Hz sine wave current to DC voltage
- Genuine combination product with precise measurement CT CTL-12-S30-10Z
- Small power loss with isolated measurement

### [Outline drawing]



### [Connection]



### [Specification] Ta=25°C

Model	CTD-01Z	
Power supply	DC24V (DC18 ~ 36V) (30mA typ)	
Rating current	100mA(FS, only for 50/60Hz sine wave)	
Output voltage	0 ~ 5VDC / 0 ~ 100mA	
Maximum current	10A(continuous)	
Accuracy	± 1% FS (50/60Hz sine wave)	
Residual voltage	≤ 50mV	
Response time	500mS / 0→FS (typ)	
Output ripple	Within 2.5% of output voltage @100mA (typ)	
Withstand voltage	AC500V(50/60Hz), 1min (Power supply in a lump-output terminal in a lump)	
Insulation resistance	DC500V, ≥100MΩ (Power supply in a lump-output terminal in a lump)	
Applied current sensor	CTL-12-S30-10Z	
Operating temperature	-20°C ~ +50°C, ≤85%RH, no condensation, for indoor assembly, free direction for setting	
Storage temperature	-30°C ~ +60°C, ≤85%RH, no condensation	
Applied wire for terminal	to Power supply	AWG14 ~ 22 / single or strand wire
	to Current Sensor	AWG16 ~ 26 / single or strand wire
Mass	approximately 70g	

### [Remark]

- (1) Increasing error in case of distortion of wave form
- (2) There is the case to change the output voltage with influence of external magnetic and electrical field. (Recommendation of shield cable to connect to CT)
- (3) In the contents of product specification, inspection, and so on, it is based on the measurement in conditions of standard temperature, humidity, and no abnormality and no vibration, in the case of no special description. It is not guarantee all specifications in the operating temperature and all condition range.
- (4) Impossible to use in outdoor exposure