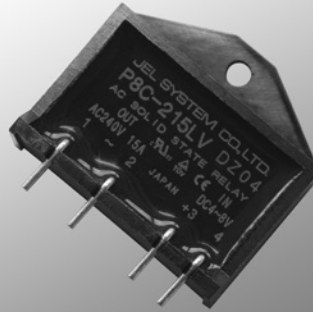


AC Solid State Relay



P8 SERIES

Solid State Relay

P8 series

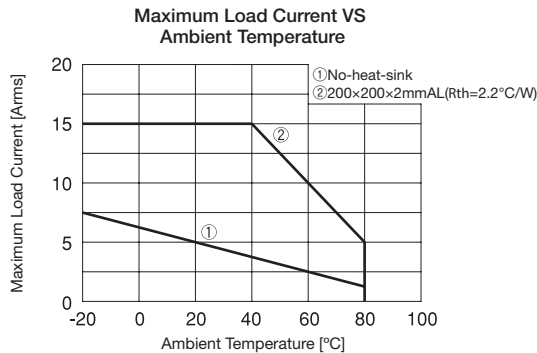
Features

- PCB attachable
- Max. load current at 15A
- Dielectric strength between input and output at 3,000V/1 min.
- Wider input voltage (L, M, H)
- Built-in snubber circuit
- UL/C-UL/TÜV standard approved

Type Information

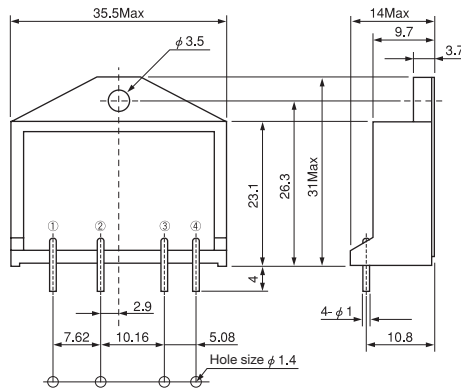
P 8 C - 2 1 5 L V				
Zero-cross-circuit C : Built-in N : Not Built-in(*)	Standard load voltage 2 : 100V, 200V	Max. load current 15 : 15A	Input voltage range L : DC4 ~ 8V M : DC8 ~ 18V H : DC18 ~ 28V	Approved Standard V : UL, C-UL, TÜV approved * Manufactured to order

Characteristics



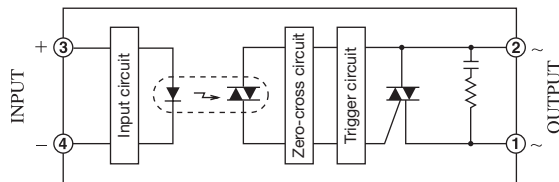
※ Description in the catalogue is subject to change without notice. Please read the specifications thoroughly before using.
 ※ Please contact JEL SYSTEM for further information.

Dimensions (mm)



Dimensions For PCB Design

Equivalent Circuit



Model	Zero-cross circuit
P8C-215 * *	○
P8N-215 * *	×

※ Description in the catalogue is subject to change without notice. Please read the specifications thoroughly before using.

※ Please contact JEL SYSTEM for further information.

■ Ratings

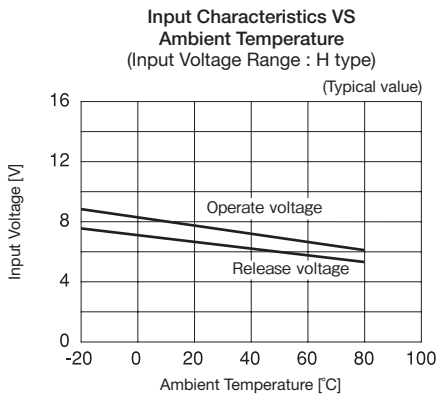
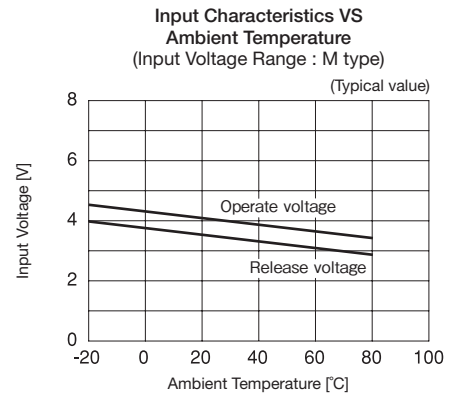
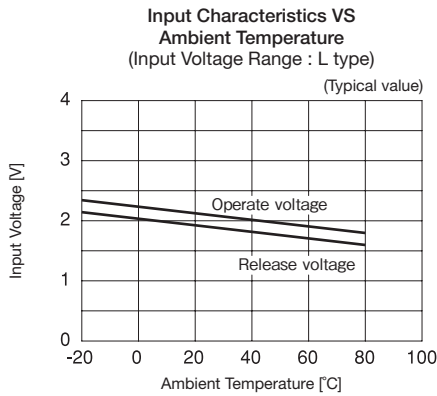
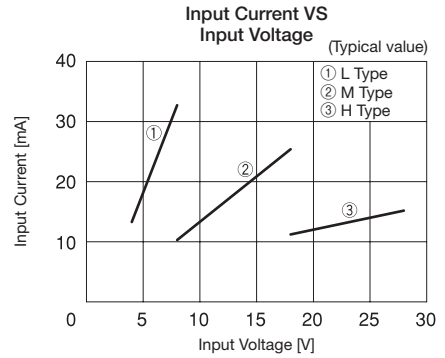
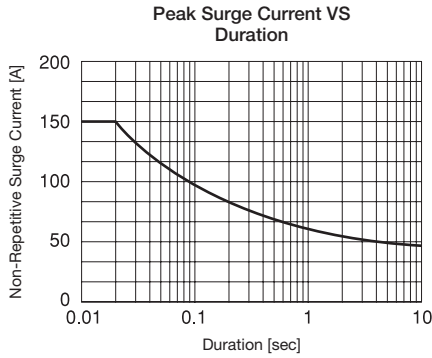
	Item	Symbols	P8C-215LV	P8C-215MV	P8C-215HV	P8N-215LV	P8N-215MV	P8N-215HV	Units
Output	Rated Load Voltage	—	120、240						V _{ACrms}
	Maximum Load Current	I _{OMAX}	15						A _{ACrms}
	Maximum Load Voltage	V _{OMAX}	264						V _{ACrms}
	Peak Repetitive Off State Voltage	V _{DRM}	600						V
	Peak 1 Cycle Surge Current	I _{SURGE}	150 (50Hz)						A
	Frequency	f	50、60						Hz
Input	Maximum Input Voltage	V _{IMAX}	8	18	28	8	18	28	V _{DC}
	Input Impedance	R _{IN}	220 ± 20%	660 ± 20%	1500 ± 20%	220 ± 20%	660 ± 20%	1500 ± 20%	Ω
General	Dielectric Strength	V _{ISO}	3,000/1 min.(Between input and output)						V _{ACrms}
			2,500/1 min.(Between input -case and output-case)						
	Isolation Resistance	R _{ISO}	10 ⁸ and above DC500V(Between input and case or output and case)						Ω
	Operating Temperature Range	T _{OPR}	- 20 ~ + 80						°C
Storage Temperature Range	T _{STG}	- 30 ~ + 100						°C	

■ Electrical Characteristics

	Item	Symbols	P8C-215LV	P8C-215MV	P8C-215HV	P8N-215LV	P8N-215MV	P8N-215HV	Units
Output	Load Voltage Range	V _O	35 ~ 264						V _{ACrms}
	Off State Leakage Current	I _{LEK}	6.0 and below (V _O = 200V)						mA _{ACrms}
	On State Voltage Drop	V _{SAT}	1.5 and below						V _{ACrms}
	Minimum Load Current	I _{OMIN}	100						mA
Input	Input Voltage Range	V _I	4 ~ 8	8 ~ 18	18 ~ 28	4 ~ 8	8 ~ 18	18 ~ 28	V _{DC}
	Operate Voltage	V _P	4.0 and below	8.0 and below	18.0 and below	4.0 and below	8.0 and below	18.0 and below	V _{DC}
	Release Voltage	V _D	1.0 and above						V _{DC}
General	Operate Time	T _{ON}	1/2 Cycle + 1 ms and below			1 ms and below			/
	Release Time	T _{OFF}	1/2 Cycle + 1 ms and below			1/2 Cycle + 1 ms and below			/
	Capacitance	C _{IO}	60 and below						PF
	Zero Cross Turn On		Built In			Not Built In			/
	Approved Standards		UL、C-UL、TÜV						/

※ Description in the catalogue is subject to change without notice. Please read the specifications thoroughly before using.

※ Please contact JEL SYSTEM for further information.



※ Description in the catalogue is subject to change without notice. Please read the specifications thoroughly before using.
 ※ Please contact JEL SYSTEM for further information.